

INSTALLATION INSTRUCTIONS

Platinum HO Bulkhead with Selectable CCT

Product Codes: **PLT18/CCT/WB, PLT18/CCT/EM/WB, PLT18/CCT/MS/WB, PLT18/CCT/EM/MS/WB**

Safety Warning



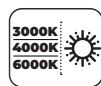
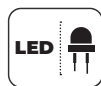
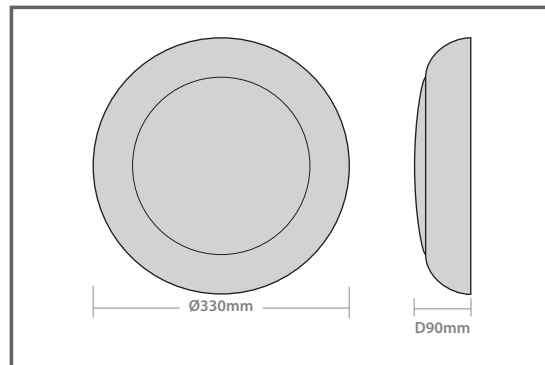
- The installation should be carried out by a qualified electrician in compliance with the current edition of the IEE Wiring Regulations.
- Prior to installation, carry out the necessary risk assessment considering the people who could be at risk, the level of risk and the precautions required to control the risk
- Ensure that the circuit supply is isolated either by the circuit supply fuse being removed or the applicable circuit breaker being turned off before installation or any maintenance.
- Check the total load on the circuit ensuring the luminaire does not exceed the rating of the circuit cable, fuse or circuit breaker.
- Long-term use and voltage fluctuations can reduce the life span of the fitting.
- If the fitting incorporates control gear, ensure careful sizing to avoid instances of nuisance tripping of the protective device used in the installation.
- Follow the provided installation instructions, using the fixings supplied or recommended.
- Keep out of reach of children.



Specification

Box Contents -
1 x Platinum Fitting
1 x Bag of Fixings

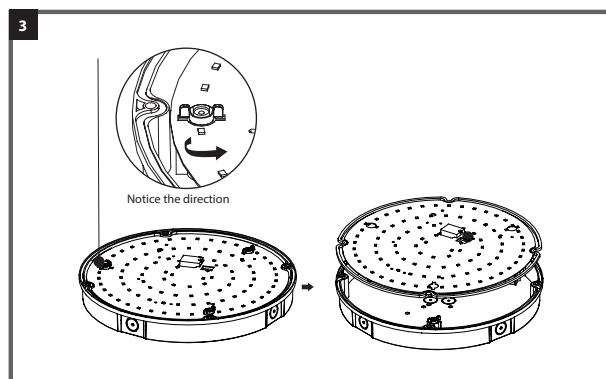
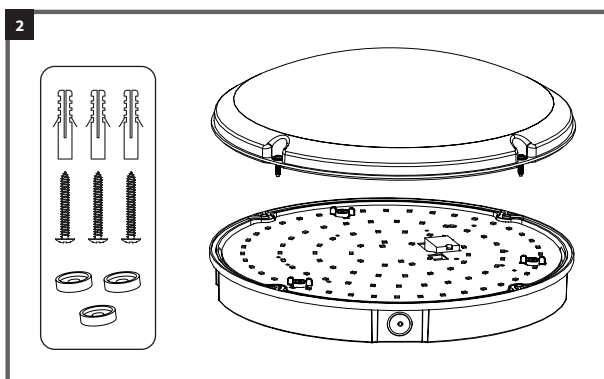
Dimensions:	Ø: 330 x D: 90mm
Material:	Body - ABS Diffuser - Polycarbonate
Working Temperature:	Standard: -20°C - +40°C Emergency: 0°C - 40°C
Included:	Bag of fixings



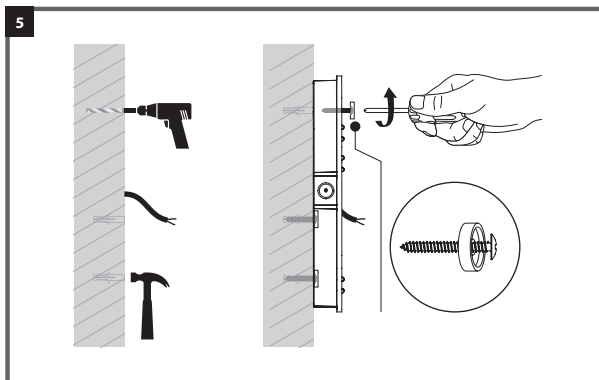
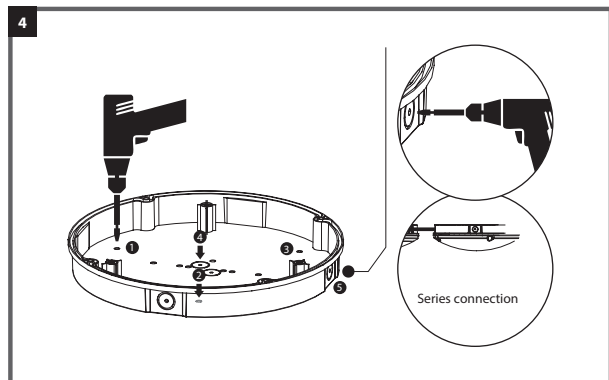
Installation Instructions

Note: This is a Class II Luminaire - No Earth required

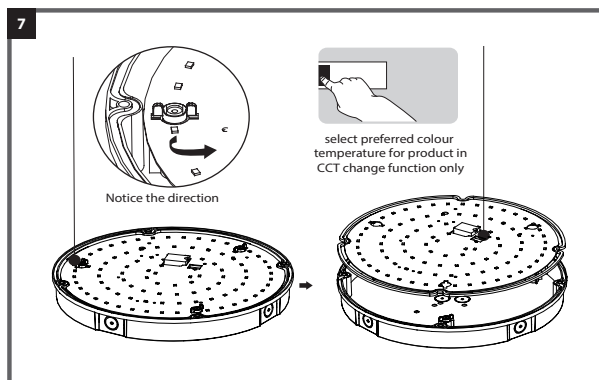
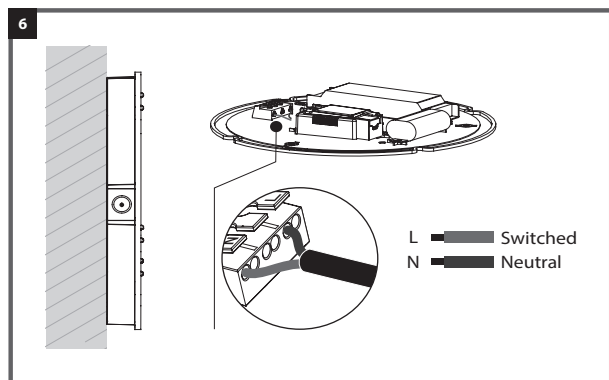
1. Isolate the mains supply before commencing with the installation.
2. Remove the diffuser and trim from the base by locating the two retention clips on the trim followed by unscrewing the diffuser before pulling away from the base.
3. Rotate the 3 x gear tray fast fixings and remove the gear tray away from the base.



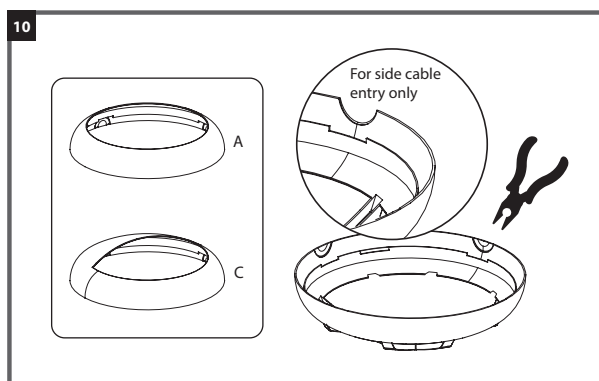
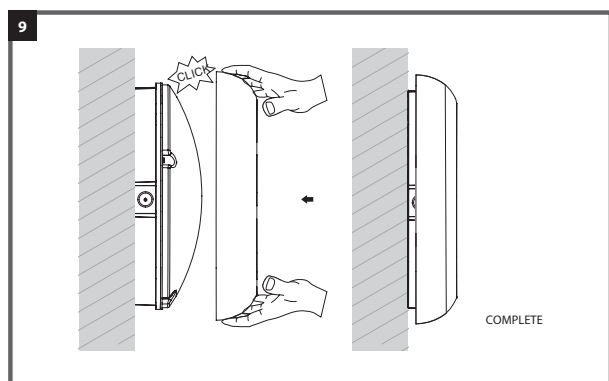
- Drill required mounting holes into the rear of the body using suitably sized drill for mounting screws. Multiple cable entry points are available for drilling (rear and side) drill the required cable entry and use blind grommet which should be pierced to pass a cable through. For exterior or wet indoor areas, replace the grommet with a suitable IP rated cable gland (not supplied).
- Feed the mains cable through the grommet / gland fitted in previous steps. Hold the fitting up to the ceiling / wall in the desired position and mark hole fixing centres. Drill fixing holes. Insert rawl plugs. Fix in position with fixings supplied.



- Ensure the luminaire has a switched live supply to "L" (switched live). Route the mains supply cable to the terminal block on the gear tray and terminate, ensuring correct polarity is observed. Ensure all conductors are fully sleeved and insulated.
- Refit the gear tray by twisting the fast fixings to secure the gear tray in the correct orientation.
- Select the preferred colour temperature using the switch located on the gear tray.

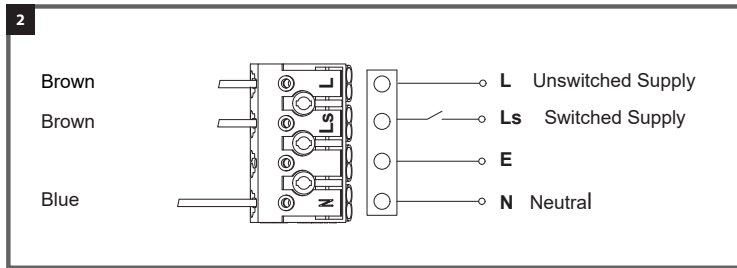


- Refit the diffuser and secure into place using the screws and replace trim by placing over the base and gently push until this clicks into position.
- If side entry cable routing see below details on cutting the front trim
- Restore the mains power supply, switch on and test for satisfactory operation



Emergency Version Instructions

- Follow instructions 1-5 on the previous page.
- The luminaire requires a secondary unswitched live supply as well as a switched supply. Connect the unswitched supply to the terminal marked L1. Connect the switched supply to the terminal marked L. The "unswitched" supply must be taken from the same phase as the "switched" supply and must be wired to the same MCB so that upon test, it is isolated at the same time as the switched supply.



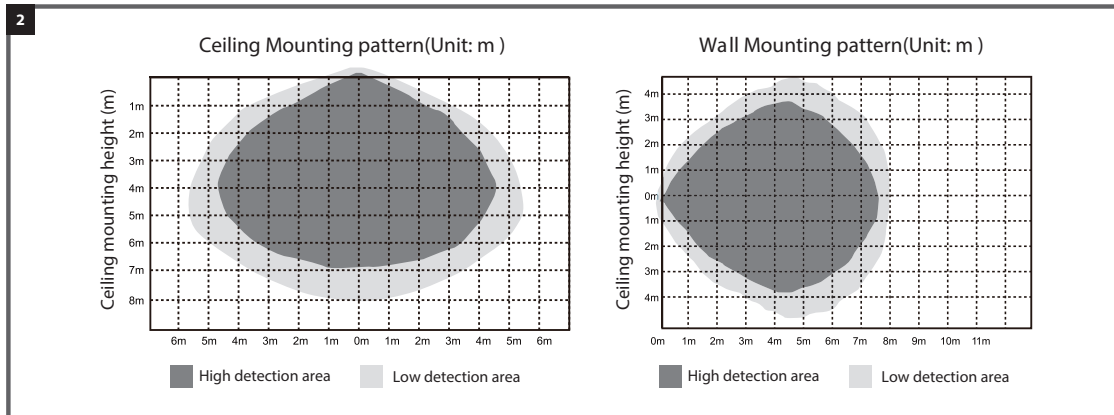
- Route the cable to the terminal block and terminate, ensuring correct location is observed.
- When the power supply is reconnected, check the green LED illuminates. This indicates the batteries are charging.
- The batteries should be charged for at least 24 hours before carrying out a full discharge test, to check batteries are charging correctly and 3 hour emergency duration is achieved.

Note: For non-maintained operation, only an unswitched supply to terminal L1 is required. For switched maintained, follow the instructions in no.2 above. For unswitched maintained operation, connect cables as in 2 above but also link L & L1.

Instructions for Microwave Sensor Set Up

The Microwave Sensor allows the Bulkhead to detect when an occupant enters or leaves an area, turning the luminaire on or off accordingly.

- The sensor should be positioned so that the occupants of the area fall inside the detection patterns shown in the diagram below.
- The diagram is based on a maximum ceiling mounting height of 7m. Note that the lower the sensor is installed, the smaller the detection range will be e.g. at a ceiling height of 2.8m the detection diameter is approximately 8m.



- The distances quoted are approximate and may vary depending on the surroundings.
- Do not site within 1m of forced air heating or ventilation.
- Do not fix to a vibrating surface.
- Sensitivity can be adjusted by selecting the required combination on dip switches 1 & 2 for different applications

6

DIP	Detection Area			Hold Time			Daylight Sensor		
	1	2	3	4	5	6	7	8	
ON	ON	100%	ON	ON	55	ON	ON	2Lux	
ON	-	75%	ON	ON	30s	ON	ON	10Lux	
ON	ON	50%	ON	-	1min	-	ON	25Lux	
ON	-	25%	ON	-	3min	ON	-	50Lux	
ON	-	-	ON	ON	5min	-	-	Disable	
ON	-	-	ON	ON	10min	-	-	-	
ON	-	-	ON	ON	20min	-	-	-	
ON	-	-	ON	-	30min	-	-	-	

Detection Area		
	1	2
I	ON	ON
II	ON	-
III	-	ON
IV	-	-

7. Hold time refers to the time period that the light remains on if no more movement is detected. Set using dip switches 3 & 4.

	Hold Time			
	3	4	5	
I	ON	ON	ON	5S
II	ON	ON	-	30S
III	ON	-	ON	1min
IV	ON	-	-	3min
V	-	ON	ON	5min
VI	-	ON	-	10min
VII	-	-	ON	20min
VIII	-	-	-	30min

8. Different daylight thresholds can be pre-set using dip switches 5 & 6. Light will always turn on upon movement if daylight sensor is disabled

	Daylight Sensor			
	6	7	8	
I	ON	ON	ON	2Lux
II	ON	ON	-	10Lux
III	-	ON	-	25Lux
IV	ON	-	-	50Lux
V	-	-	-	Disable

Self-Test Emergency Operation

- Once the unit is powered up, it will automatically initiate a self test and diagnostics as follows:
 Every 4 seconds: Checking for battery disconnection, charger board fault, lamp failure and transformer failure.
 Every Month: Performing a 3 minutes duration test.
 Every Year: Performing a 1 Hour duration test.
 All test functions are factory preset and do not need field adjustment.
- Dual colour indicator LED status meanings.
 Green Solid ON Ready/Normal Operation
 Flashing Testing
 Red Requires Service

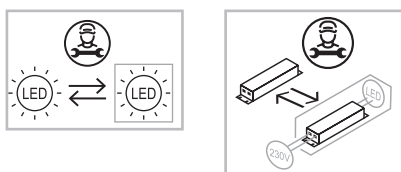
●	One flash, 4 seconds pause	Battery not connected
●●	Two flashes, 4 seconds pause	Battery short or low battery voltage
●●●	Three flashes, 4 seconds pause	Charger board fault
●●●●	Four flashes, 4 seconds pause	Transformer fault
●●●●●	Five flashes, 4 seconds pause	LED lamp fault

Guarantee

This product is guaranteed for a period of 5 years from the date of purchase. The guarantee is invalid in the case of improper use, tampering, removal of the Q.C. date label, installation in an improper working environment or installation not according to the current edition of the I.E.E. Wiring Regulations (BS7671). The guarantee is also invalidated if the luminaire has been insulation tested. Should this product fail during the guarantee period it will be replaced free of charge, subject to correct installation and return of the faulty unit. We do not accept responsibility for any installation costs associated with the replacement of this product. Your statutory rights are not affected. We reserve the right to alter specifications without prior notice.

Maintenance

- This fitting will require routine cleaning if used in adverse (dust, paint, welding, oils etc) environments. Do not use solvents, aggressive detergents or abrasives.
- The light source & driver in this luminaire can be quickly and easily replaced at end of life. This should be carried out by a competent person. Contact Red Arrow for details of replacements.



- When this fitting comes to the end of its life or you choose to replace it, please do not dispose of it with your normal waste. Please recycle where the facilities exist, check with your local authority for suitable options.

INS/COMMERCIAL/0024/PLT18-CCT/V2